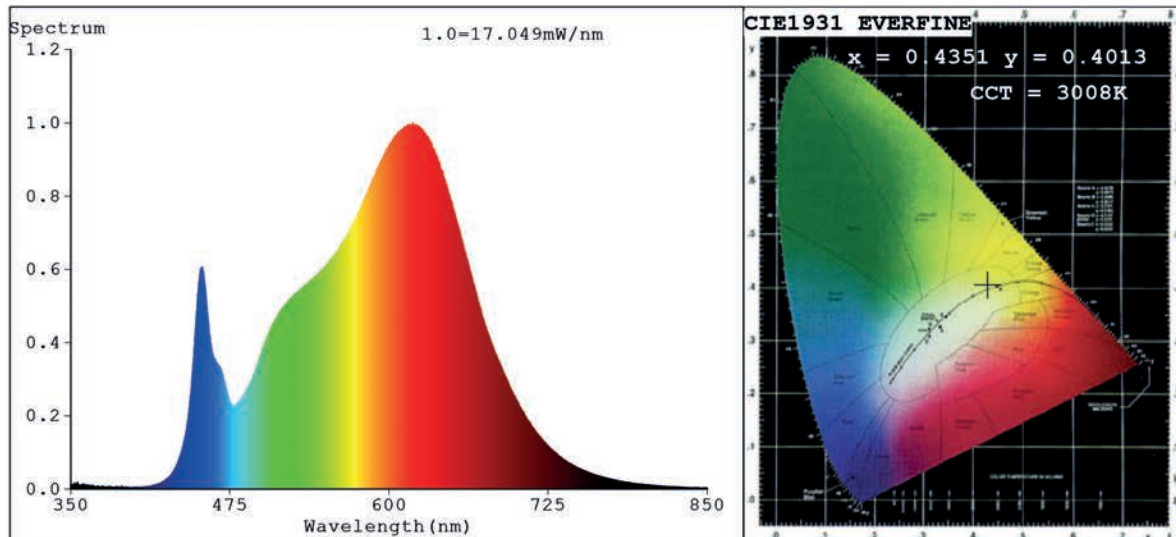


## Spectrum Test Report



### Color Parameters:

Chromaticity Coordinate:  $x=0.4351$   $y=0.4013$   $u'=0.2506$   $v'=0.5200$   
 CCT=3008K (Duv=-0.0009) Dominant WL:Ld =583.1nm Purity=51.0%  
 Ratio:R=24.3% G=72.7% B=3.0%; Peak WL:Lp=618.8nm FWHM=153.7nm  
 Render Index:Ra=92.6 CRI=89.9 TM30:Rf=90 Rg=99  
 R1 =93 R2 =97 R3 =98 R4 =93 R5 =93 R6 =96 R7 =90  
 R8 =79 R9 =54 R10=94 R11=95 R12=81 R13=95 R14=100 R15=88

### Photo Parameters:

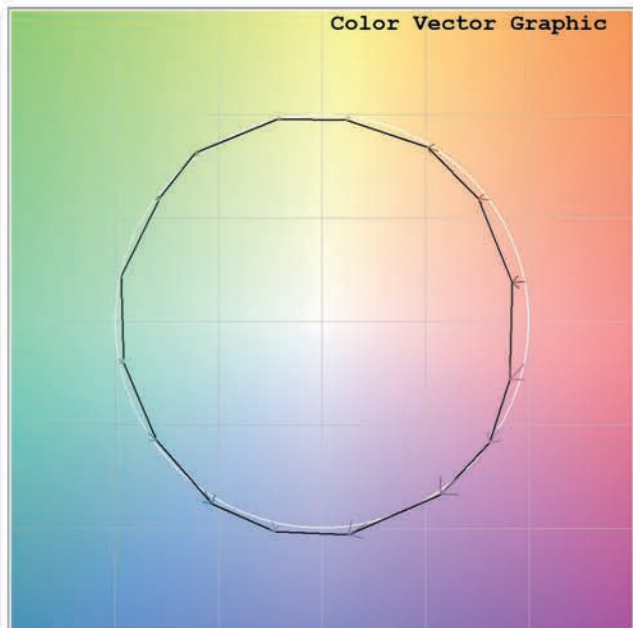
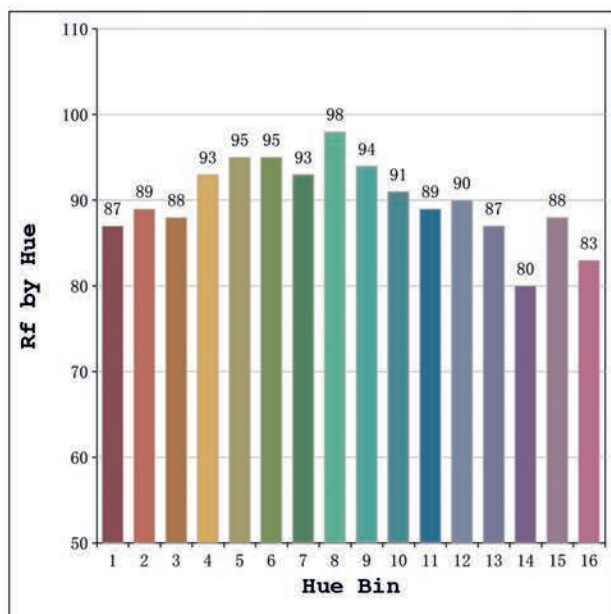
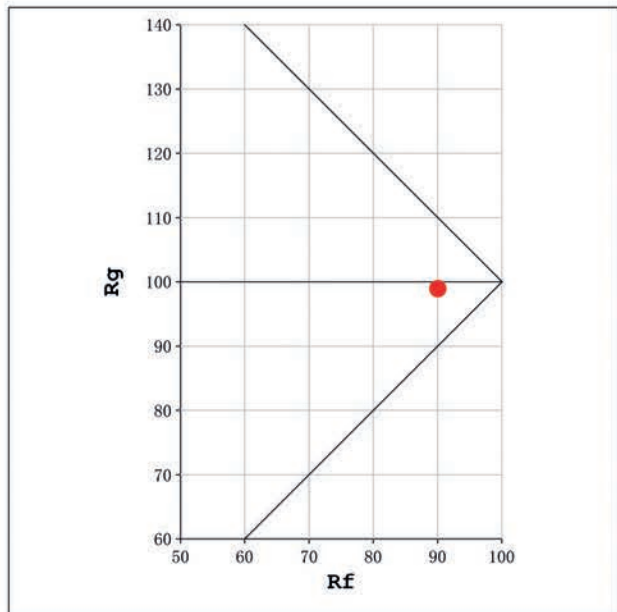
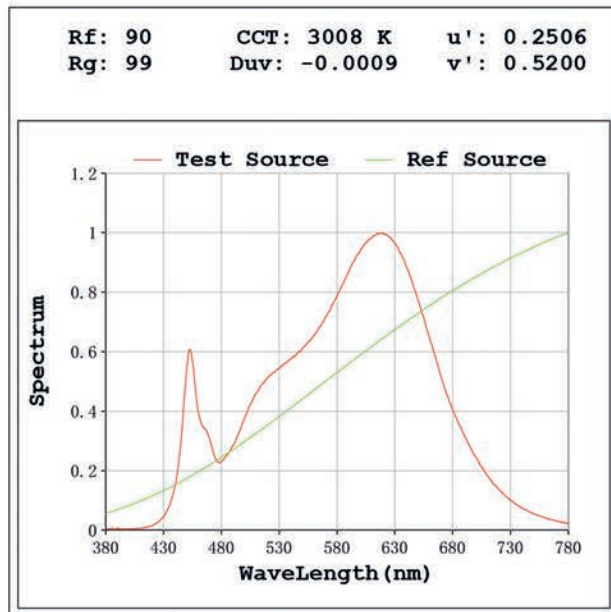
Flux = 837.3 lm Eff. : 93.36 lm/W Fe = 2.805 W

### Electrical parameters:

V = 23.998 V I = 0.3737 A P = 8.968 W PF = 1.000

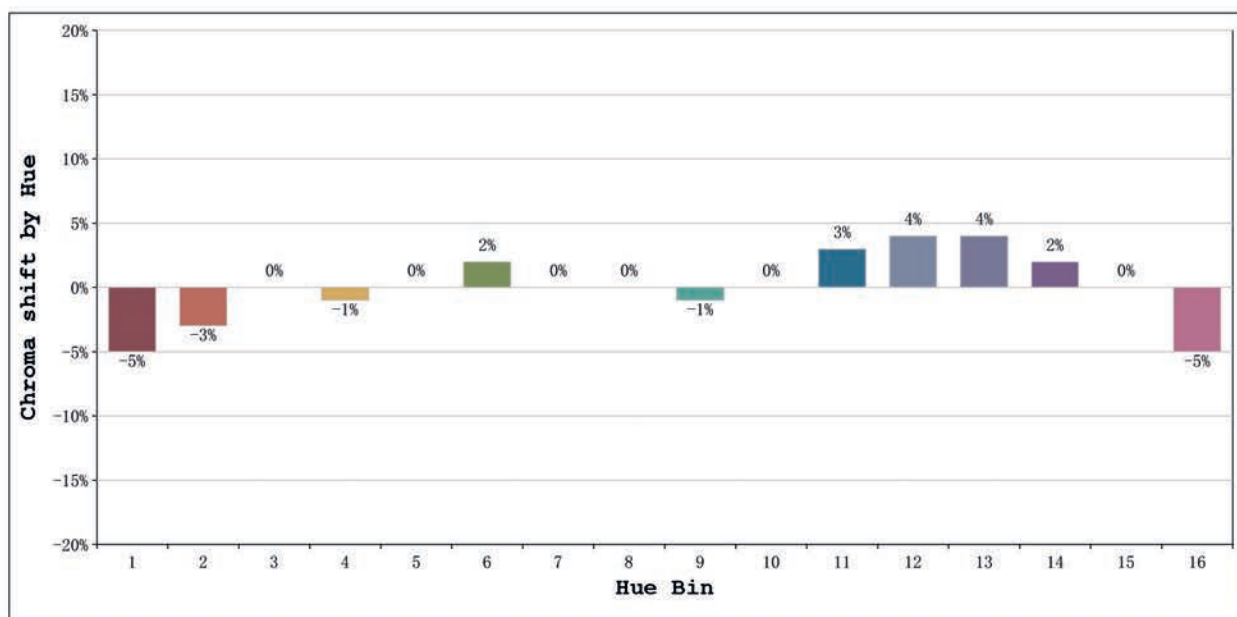
Status: Integral T = 1554 ms Ip = 50131 (76%)

Model:Ecoled Neón 360 mini 3000K	Number: 10.296
Tester:Sergio Carneros	Date:2025-06-16 12:49:10
Temperature:20Deg	Humidity:50%
Manufacturer:Luz Negra	Remarks:100cm de tira flexible



Model:Ecoled Neón 360 mini 3000K  
 Tester:Sergio Carneros  
 Temperature:20Deg  
 Manufacturer:Luz Negra

Number: 10.296  
 Date:2025-06-16 12:49:10  
 Humidity:50%  
 Remarks:100cm de tira flexible



			Graphic shift(%)	
Hue Bin	Hue Angle	Rf	Chroma	Hue
1	0.0° - 22.5°	87	-5	1
2	22.5° - 45.0°	89	-3	3
3	45.0° - 67.5°	88	0	5
4	67.5° - 90.0°	93	-1	1
5	90.0° - 112.5°	95	0	2
6	112.5° - 135.0°	95	2	1
7	135.0° - 157.5°	93	0	-1
8	157.5° - 180.0°	98	0	0
9	180.0° - 202.5°	94	-1	2
10	202.5° - 225.0°	91	0	5
11	225.0° - 247.5°	89	3	6
12	247.5° - 270.0°	90	4	2
13	270.0° - 292.5°	87	4	-9
14	292.5° - 315.0°	80	2	-11
15	315.0° - 337.5°	88	0	-6
16	337.5° - 360.0°	83	-5	-8

Model:Ecoled Neón 360 mini 3000K	Number: 10.296
Tester:Sergio Carneros	Date:2025-06-16 12:49:10
Temperature:20Deg	Humidity:50%
Manufacturer:Luz Negra	Remarks:100cm de tira flexible